

FRENOVO



IVD RAW MATERIALS

HANGZHOU FRENOVO BIOTECH CO., LTD.

Email enquiry@frenovo.com **Web** www.frenovo.com

FRENOVO

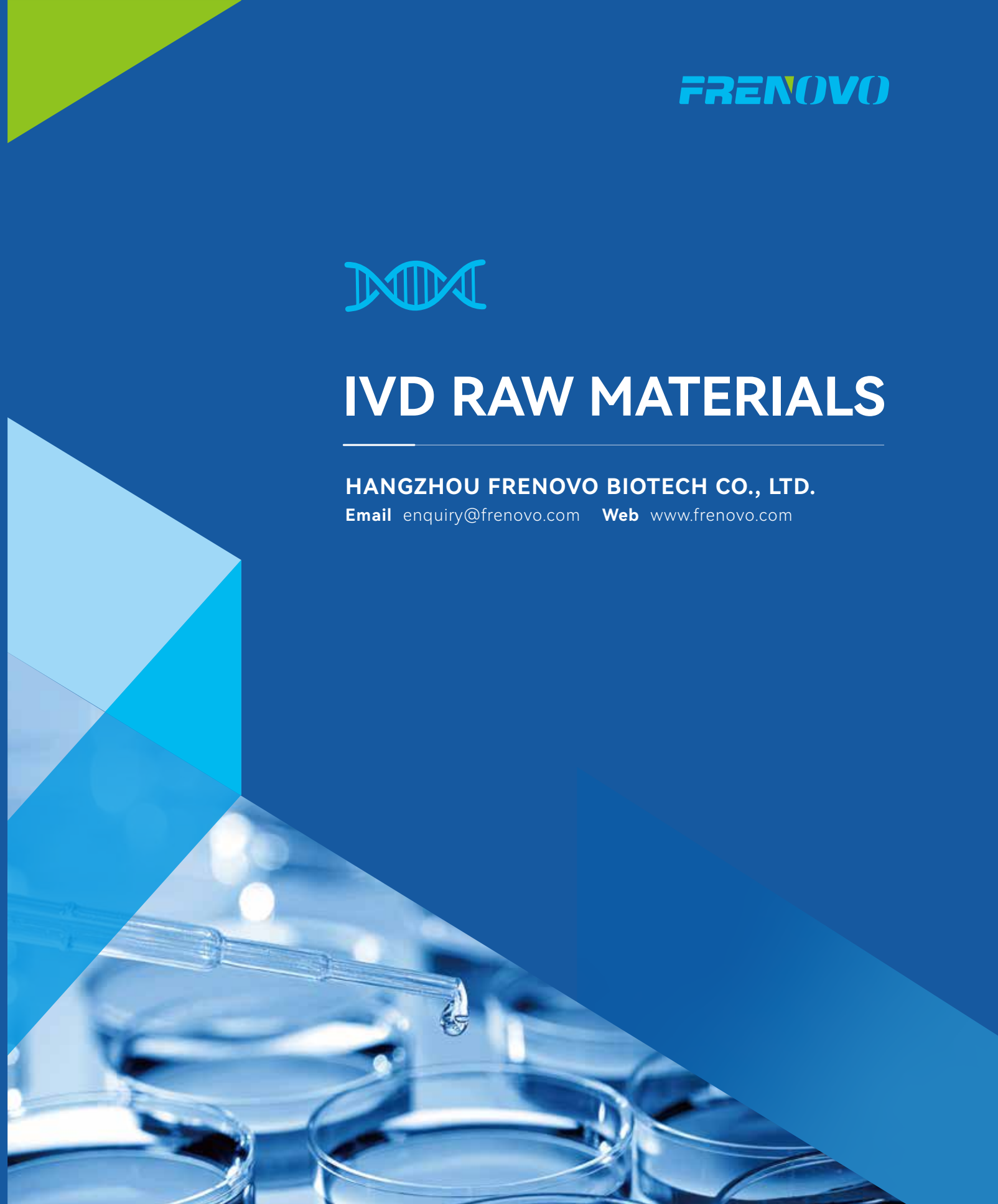
HANGZHOU FRENOVO BIOTECH CO., LTD.

Add Room 401, Building 26, Room 301&401, Building 27, No. 488-1, Donghu North Road, Donghu Street, LinPing District, Hangzhou City, Zhejiang Province, China

Tel 0571-89170657 **Email** enquiry@frenovo.com **Web** www.frenovo.com



- Website -



Viral Infectious Disease



Parameter	Product	Type	Catalog No.	Source	Application	Recommended Use
HIV-O	IV51	rAg	GHCA065	E.coli	ELISA/LF	Coating
HIV-I	IV24	rAg	GHCA051-4	E.coli	ELISA/LF	Coating
	IV25	rAg	GHCA051-3	E.coli	ELISA/LF	Labeling
HIV-II	IV31	rAg	GHCA055-3	E.coli	ELISA/LF	Coating
	IV32	rAg	GHCA055-4	E.coli	ELISA/LF	Labeling
HIV-P24	P24-6C1	mAb	GHMA091-1	Mouse	ELISA/LF	Coating
	P24-12C7	mAb	GHMA091-2	Mouse	ELISA/LF	Labeling
Influenza A virus	FluA-8D2	mAb	GHMA092-5	Mouse	ELISA/LF	Labeling
	Flu-A-5C3	mAb	GHMA092-4	Mouse	ELISA/LF	Coating
Influenza B virus	FluB-4F5	mAb	GHMA038-1	Mouse	ELISA/LF	Labeling
	FluB-7A3	mAb	GHMA038-2	Mouse	ELISA/LF	Coating
RSV	RSV-19D2	mAb	GHMA168-2	Mouse	ELISA/LF	Labeling
	RSV-21F4	mAb	GHMA168-5	Mouse	ELISA/LF	Coating
Mycoplasma pneumoniae	MP-6E9	mAb	GHMA206-1	Mouse	ELISA/LF	Labeling
	MP-8G3	mAb	GHMA206-2	Mouse	ELISA/LF	Coating
	MP55	rAg	GHCA042	E.coli	ELISA/LF	Coating/Labeling
Zika virus	Z58	rAg	GHCA082-1	E.coli	ELISA/LF	Coating/Labeling
	Z66	rAg	GHCA082-2	E.coli	ELISA/LF	Coating/Labeling
Human Parvovirus	B19	rAg	GHCA062	E.coli	ELISA/LF	Coating/Labeling
Coxsackie	CA73	rAg	GHCA104-1	E.coli	ELISA/LF	Coating/Labeling
Dengue	DEN43	rAg	GHCA088-2	Culture	ELISA/LF	Coating/Labeling
	DEN-NS1	rAg	GHCT030-1	Culture	ELISA/LF	Quality Control

Viral Infectious Disease



Parameter	Product	Type	Catalog No.	Source	Application	Recommended Use
Dengue	DEN-4G9	mAb	GHMA132-1	Mouse	ELISA/LF	Coating
	DEN-5D3	mAb	GHMA132-2	Mouse	ELISA/LF	Labeling
Chikungunya	CE71	rAg	GHCA059-2	E.coli	ELISA/LF	Coating/Labeling
	CE73	rAg	GHCA059-1	E.coli	ELISA/LF	Coating/Labeling

Non-Viral Infectious Disease



Parameter	Product	Type	Catalog No.	Source	Application	Recommended Use
Syphilis	TP34	rAg	GHCA001-6	E.coli	ELISA/LF	Coating
	TP35	rAg	GHCA001-7	E.coli	ELISA/LF	Labeling
	TP35 mAb	mAb	GHMA001-1	Mouse	ELISA/LF	Labeling
Typhoid	TP-8D8	mAb	GHMA191-1	Mouse	ELISA/LF	Labeling
	TP-11A7	mAb	GHMA191-2	Mouse	ELISA/LF	Coating
	T63	rAg	GHCA009-1	E.coli	ELISA/LF	Coating/Labeling
	T51	rAg	GHCA009-2	E.coli	ELISA/LF	Coating/Labeling
HRPII (Malaria pf)	HRPII-4C6	mAb	GHMA002-3	Mouse	ELISA/LF	Labeling
	HRPII-7F10	mAb	GHMA002-4	Mouse	ELISA/LF	Coating
Malaria PV	PV-3B9	mAb	GHMA116-1	Mouse	ELISA/LF	Labeling
	PV-7C6	mAb	GHMA116-2	Mouse	ELISA/LF	Coating
Malaria Pan	Pan-15H9	mAb	GHMA117-2	Mouse	ELISA/LF	Coating
	Pan-14F6	mAb	GHMA117-3	Mouse	ELISA/LF	Labeling
Type A Clostridium perfringens alaphatoxin protein	CA15	rAg	GHCA181-1	E.coli	ELISA/LF	Coating/Labeling

Non-Viral Infectious Disease

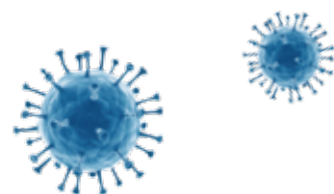


Parameter	Product	Type	Catalog No.	Source	Application	Recommended Use
Clostridioides difficile	GDH-1A4	mAb	GHMA041-1	Mouse	ELISA/LF	Coating/Labeling
	GDH-2D5	mAb	GHMA041-2	Mouse	ELISA/LF	Coating/Labeling
Clonorchiasis	P36	rAg	GHCA029	E.coli	ELISA/LF	Coating/Labeling
Schistosoma	SJ54	rAg	GHCA028	E.coli	ELISA/LF	Coating/Labeling

COVID-19



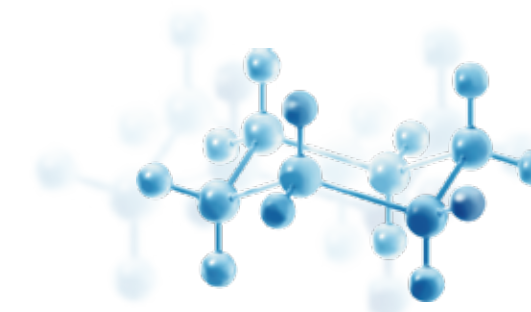
Parameter	Product	Type	Catalog No.	Source	Application	Recommended Use
COVID-19 N antigen	CN98	rAg	GHCA105-11	E.coli	ELISA/LF	Quality Control/Labeling
	NP-7H6	mAb	GHMA105-15	Mouse	ELISA/LF	Labeling
	NP-12F5	mAb	GHMA105-17	Mouse	ELISA/LF	Coating
	NP-8F5	rAb	GHMA105-19	Culture	ELISA/LF	Labeling
	NP-25C6	mAb	GHMA105-22	Mouse	ELISA/LF	Coating
COVID-19 IgG/IgM antibody	CN97	rAg	GHCA105-10	E.coli	ELISA/LF	Coating/Labeling
	Mouse-anti-human IgM-6C5	mAb	GHMA018-2	Mouse	ELISA/LF	Coating
	Mouse-anti-human IgM-7C4	mAb	GHMA019-2	Mouse	ELISA/LF	Coating
COVID-19 neutralizing antibody	RBD-hFc	Ag	GHCA105-19	Culture	ELISA/LF	Labeling
	RBD-mFc	Ag	GHCA105-20	Culture	ELISA/LF	Coating



Cardiovascular Disease



Parameter	Product	Type	Catalog No.	Source	Application	Recommended Use
h-FABP	h-FABP-B11	mAb	GHMA090-1	Mouse	ELISA/LF	Coating
	h-FABP-2F9	mAb	GHMA090-2	Mouse	ELISA/LF	Labeling
NT-proBNP	NT-proBNP-21G6	mAb	GHMA050-1	Mouse	ELISA/LF	Coating
	NT-proBNP-4D1	mAb	GHMA050-2	Mouse	ELISA/LF	Labeling
MYO	MYO Antigen	rAg	GHCA068-1	E.coli	ELISA/LF	Quality Control
	MYO-12E3	mAb	GHMA029-1	Mouse	ELISA/LF	Coating
	MYO-5G4	mAb	GHMA029-2	Mouse	ELISA/LF	Labeling
	MYO-8E3	mAb	GHMA029-3	Mouse	ELISA/LF	Labeling
cTnI	cTnI Antigen	rAg	GHCA072-1	E.coli	ELISA/LF	Quality Control
	cTnI-15C6	mAb	GHMA020	Mouse	ELISA/LF	Coating
	cTnI-8D3	mAb	GHMA021	Mouse	ELISA/LF	Labeling
cTnT	cTnT-5B4	mAb	GHMA193-2	Mouse	ELISA/LF	Labeling
	cTnT-12D6	mAb	GHMA193-3	Mouse	ELISA/LF	Coating
D-Dimer	D-Dimer-1A4	mAb	GHMA096-1	Mouse	ELISA/LF	Coating
	D-Dimer-4E6	mAb	GHMA096-2	Mouse	ELISA/LF	Labeling
MPO	MPO-2A7	mAb	GHMA059-1	Mouse	ELISA/LF	Labeling
	MPO-2E9	mAb	GHMA059-2	Mouse	ELISA/LF	Coating



Inflammation Marker



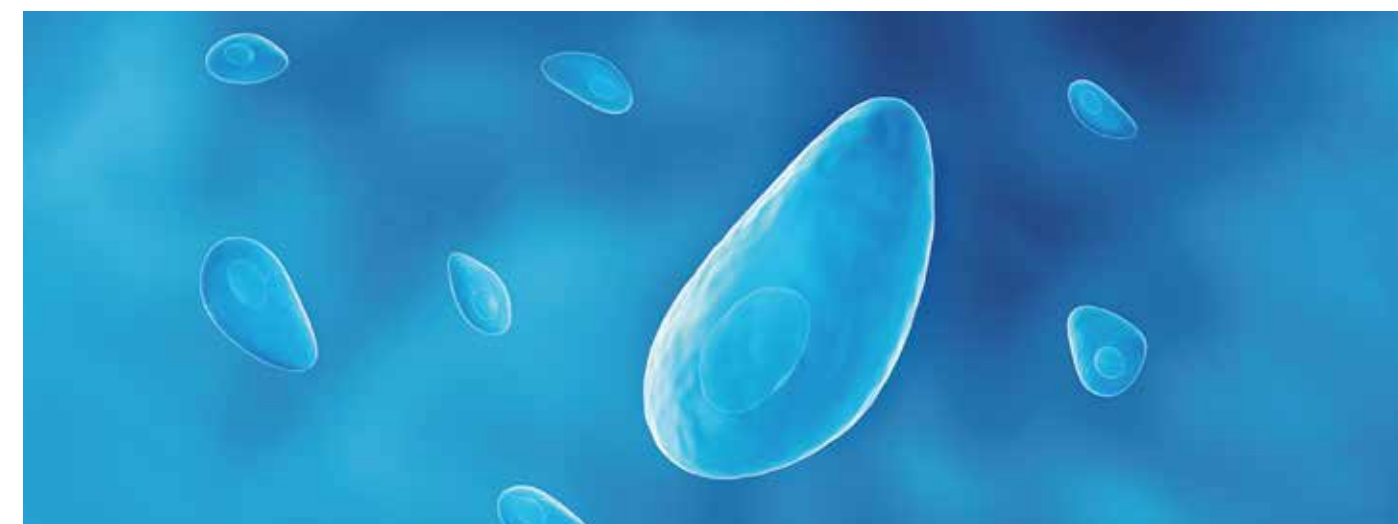
Parameter	Product	Type	Catalog No.	Source	Application	Recommended Use
hCRP	CRP Antigen	Ag	GHCA070-1	Extraction	ELISA/LF	Quality Control
	CRP 6G5	mAb	GHMA057-1	Mouse	ELISA/LF	Labeling
	CRP 7G9	mAb	GHMA057-2	Mouse	ELISA/LF	Coating
PCT	PCT Antigen	rAg	GHCA071-1	E.coli	ELISA/LF	Quality Control
	PCT-4D2	mAb	GHMA052-4	Mouse	ELISA/LF	Coating
	PCT-12C5	mAb	GHMA052-1	Mouse	ELISA/LF	Labeling
SAA	SAA Antigen	rAg	GHCA069-2	E.coli	ELISA/LF	Quality Control
	SAA-15A9	mAb	GHMA065-4	Mouse	ELISA/LF	Labeling
	SAA-7E5	mAb	GHMA065-6	Mouse	ELISA/LF	Coating
IL-6	IL6 Antigen	rAg	GHCA053	E.coli	ELISA/LF	Quality Control
	IL6-6H3	mAb	GHMA067-5	Mouse	ELISA/LF	Labeling/Coating
	IL6-3F2	mAb	GHMA067-6	Mouse	ELISA/LF	Labeling/Coating
IgG4	IgG4 Antigen	rAg	GHCA056-6	Culture	ELISA/LF	Quality control/Coating
	IgG4-12C9	mAb	GHMA060-4	Mouse	ELISA/LF	Labeling



TORCH



Parameter	Product	Type	Catalog No.	Source	Application	Recommended Use
TOX	Tox45	rAg	GHCA003	E.coli	ELISA/LF	Labeling
Rubella	RV35	rAg	GHCA005	E.coli	ELISA/LF	Labeling
HSV-II	HSV37	rAg	GHCA004	E.coli	ELISA/LF	Labeling
HCMV	CMV26	rAg	GHCA026	E.coli	ELISA/LF	Labeling
25-OH-Vitamin D	VD-18F7	rAb	GHMA157-1	Rabbit	ELISA	Labeling
Anti-mullerian hormone	AMH-13F9	rAb	GHMA155-9	Rabbit	ELISA/LF	Coating/Labeling
	AMH-3C12	rAb	GHMA155-10	Rabbit	ELISA/LF	Coating/Labeling
Neisseria gonorrhoeae	NGH-5A8	mAb	GHMA130-1	Mouse	ELISA/LF	Labeling
	NGH-2F3	mAb	GHMA130-2	Mouse	ELISA/LF	Coating
Candida albicans	CA-12C7	rAb	GHMA139-1	Rabbit	ELISA/LF	Labeling
	CA-5D10	rAb	GHMA139-2	Rabbit	ELISA/LF	Coating
Chlamydia trachomatis	CHL-7F13	mAb	GHMA174-1	Mouse	ELISA/LF	Coating/Labeling
	CHL-11B9	mAb	GHMA174-2	Mouse	ELISA/LF	Coating/Labeling



Hormone Marker



Parameter	Product	Type	Catalog No.	Source	Application	Recommended Use
HCG	HCV-9G9(α chain)	mAb	GHMA034-3	Mouse	ELISA/LF	Coating
	HCG-6B12(β chain)	mAb	GHMA024-3	Mouse	ELISA/LF	Labeling
LH	LH-9F1(β chain)	mAb	GHMA035	Mouse	ELISA/LF	Coating
	LH-11D3(β chain)	mAb	GHMA036	Mouse	ELISA/LF	Labeling
Thyroid Function	T3-IgG	conjugation	GHCA015	/	ELISA/LF	Coating
	T3-12F9	rAb	GHMA012-3	Rabbit	ELISA/LF	Labeling
	T4-IgG	conjugation	GHCA016	/	ELISA/LF	Coating
	T4-12C9	rAb	GHMA013-3	Rabbit	ELISA/LF	Labeling
Progesterone	Prog-Albumin	conjugation	GHCA021	/	ELISA/LF	Coating
	Prog-17H4	mAb	GHMA118-1	Mouse	ELISA/LF	Labeling
Testosterone	Tes-Albumin	conjugation	GHCA017	/	ELISA/LF	Coating
	Tes-11D8	mAb	GHMA135-1	Mouse	ELISA/LF	Labeling
Estradiol	E2-Albumin	conjugation	GHCA019	/	ELISA/LF	Coating

Gastrointestinal Disease



Parameter	Product	Type	Catalog No.	Source	Application	Recommended Use
H.pylori	HP33	rAg	GHCA007	E.coli	ELISA/LF	Coating/Labeling
	HP38	rAg	GHCA045	E.coli	ELISA/LF	Coating
	HP-5A4	mAb	GHMA047-1	Mouse	ELISA/LF	Coating
	HP-16E5	mAb	GHMA047-2	Mouse	ELISA/LF	Labeling
H.pylori urease A	UreA-1	rAg	GHCA035-1	E.coli	ELISA/LF	Coating/Labeling

Parameter	Product	Type	Catalog No.	Source	Application	Recommended Use
H.pylori urease B	UreB-1	rAg	GHCA098-1	E.coli	ELISA/LF	Coating/Labeling
H.pylori cytotoxic	CagA-1	rAg	GHCA099-1	E.coli	ELISA/LF	Coating/Labeling
H.pylori VacA toxin	VacA-1	rAg	GHCA100-1	E.coli	ELISA/LF	Coating/Labeling
Gastrin-17	G17-1F6	mAb	GHMA099-1	Mouse	ELISA/LF	Labeling
	G17-5B1	mAb	GHMA099-3	Mouse	ELISA/LF	Coating
PGI	PGI-3F5	mAb	GHMA097-1	Mouse	ELISA/LF	Coating/Labeling
	PGI-5A8	mAb	GHMA097-2	Mouse	ELISA/LF	Coating/Labeling
PGII	PGII-6H2	mAb	GHMA098-1	Mouse	ELISA/LF	Coating/Labeling
	PGII-1D5	mAb	GHMA098-2	Mouse	ELISA/LF	Coating/Labeling
FOB	FOB-2C11	mAb	GHMA023-2	Mouse	ELISA/LF	Labeling
	FOB-10C4	mAb	GHMA023-3	Mouse	ELISA/LF	Coating
Calprotectin	CAL-15B7	mAb	GHMA149-3	Mouse	ELISA/LF	Coating/Labeling
	CAL--16K3	mAb	GHMA149-4	Mouse	ELISA/LF	Coating/Labeling
HbA1c	HbA1c-8H8	mAb	GHMA028-6	Mouse	Turbidimetry	Coating/Labeling
	HbA1c-10B4	mAb	GHMA028-7	Mouse	Turbidimetry	Coating/Labeling
TRF	TRF-3B6	mAb	GHMA071-1	Mouse	ELISA/LF	Coating
	TRF-2A8	mAb	GHMA071-2	Mouse	ELISA/LF	Labeling
RV	RV-11H4	mAb	GHMA165-1	Mouse	ELISA/LF	Coating
	RV-7F12	mAb	GHMA165-2	Mouse	ELISA/LF	Labeling
ADV	ADV-8D2	mAb	GHMA166-1	Mouse	ELISA/LF	Coating/Labeling
	ADV-16C6	mAb	GHMA166-2	Mouse	ELISA/LF	Coating/Labeling
Norovirus G1	NV-6H5(G1)	mAb	GHMA200-1	Mouse	ELISA/LF	Labeling
	NV-5D9(G1)	rAb	GHMA200-3	Rabbit	ELISA/LF	Coating
Norovirus G2	NV-9F3(G2)	mAb	GHMA200-2	Mouse	ELISA/LF	Labeling
	NV-7K2(G2)	rAb	GHMA200-4	Rabbit	ELISA/LF	Coating

Liver Disease



Parameter	Product	Type	Catalog No.	Source	Application	Recommended Use
HAV	AV56 Recombinant Antigen	rAg	GHCA031	E.coli	ELISA/LF	Labeling
	AV56 pAb	pAb	GHPA001	Rabbit	LF	Control Line
HBV	HBsAg-17F9	mAb	GHMA25-2	Mouse	ELISA/LF	Coating
	HBsAg-14A3	mAb	GHMA26	Mouse	ELISA/LF	Labeling
HCV	C57	rAg	GHCA061-1	E.coli	ELISA/LF	Labeling
	C44	rAg	GHCA061-2	E.coli	ELISA/LF	Coating
HDV	DV42	rAg	GHCA027	E.coli	ELISA/LF	Coating/Labeling
HEV	EV64	rAg	GHCA002	E.coli	ELISA/LF	Coating/Labeling

Vaccine's Effect Evaluation



Parameter	Product	Type	Catalog No.	Source	Application	Recommended Use
Measles Virus	MV32	rAg	GHCA036	E.coli	ELISA/LF	Coating/Labeling
JEV	JEV19	rAg	GHCA032	E.coli	ELISA/LF	Coating/Labeling
Mumps Virus	M25	rAg	GHCA040	E.coli	ELISA/LF	Coating/Labeling
Poliovirus	V17	rAg	GHCA041	E.coli	ELISA/LF	Coating/Labeling
Bordetella Pertuussis	BP31	rAg	GHCA008	E.coli	ELISA/LF	Coating/Labeling

Food Safety

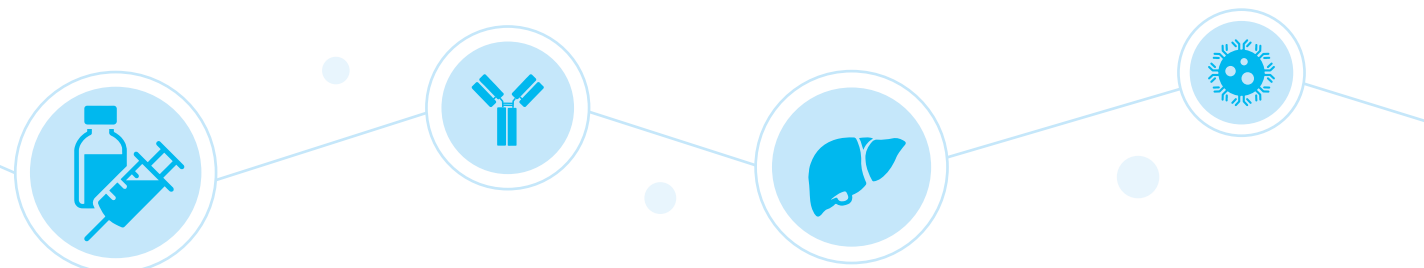


Parameter	Product	Type	Catalog No.	Source	Application	Recommended Use
BT Cry Ab/Ac	Cry-8E9	mAb	GHMA094-3	Mouse	ELISA/LF	Labeling
	Cry-11G3	mAb	GHMA094-4	Mouse	ELISA/LF	Coating
CP4-EPSPS	CP4 Antigen	rAg	GHCA189	E.coli	ELISA/LF	Quality Control
	CP4-16E5	mAb	GHMA093-4	Mouse	ELISA/LF	Labeling/Coating
	CP4-4D11	mAb	GHMA093-3	Mouse	ELISA/LF	Labeling/Coating
PAT/pat	PAT quality control	rAg	GHCA052-1	rAg	ELISA/LF	Quality Control
	PAT-12E6	mAb	GHMA201-1	mAb	ELISA/LF	Labeling
	PAT-7B11	mAb	GHMA201-2	mAb	ELISA/LF	Coating
Aflatoxin M1	M1-9D8	mAb	GHMA134-2	Mouse	ELISA/LF	Labeling

Kidney Injury



Parameter	Product	Type	Catalog No.	Source	Application	Recommended Use
HSA/MAU	HSA Antigen	Natural	GHCA093	Human	ELISA/LF	Quality Control
	HSA-2D7	mAb	GHMA049-1	Mouse	ELISA/LF	Coating
	HSA-7G3	mAb	GHMA049-2	Mouse	ELISA/LF	Labeling
NGAL	NGAL-5A10	mAb	GHMA048	Mouse	ELISA/LF	Labeling
	NGAL-2A6	mAb	GHMA054	Mouse	ELISA/LF	Coating
CysC	CysC-17H10	mAb	GHMA055	Mouse	ELISA/LF	Coating
	CysC-1A6	mAb	GHMA056	Mouse	ELISA/LF	Labeling



DOA



Parameter	Product	Type	Catalog No.	Source	Application	Recommended Use
MET	MET-BSA	conjugation	GHCA135-1	/	LF	Coating
	MET mAb	mAb	GHMA177-1	Mouse	LF	Labeling
KET	KET-BSA	conjugation	GHCA120	/	LF	Coating
	KET mAb	mAb	GHMA120	Mouse	LF	Labeling
MTD	MTD-BSA	conjugation	GHCA127	/	LF	Coating
	MTD mAb	mAb	GHMA127	Mouse	LF	Labeling
THC	THC-BSA	conjugation	GHCA122	/	LF	Coating
	THC mAb	mAb	GHMA122	Mouse	LF	Labeling
AMP	AMP-BSA	conjugation	GHCA123	/	LF	Coating
	AMP mAb	mAb	GHMA123	Mouse	LF	Labeling
BZO	BZO-BSA	conjugation	GHCA124	/	LF	Coating
	BZO mAb	mAb	GHMA124	Mouse	LF	Labeling
COT	COT-BSA	conjugation	GHCA128	/	LF	Coating
	COT mAb	mAb	GHMA128	Mouse	LF	Labeling
FYL	FYL-BSA	conjugation	GHCA137-1	/	LF	Coating
	FYL mAb	mAb	GHMA137-1	Mouse	LF	Labeling
PCP	PCP-BSA	conjugation	GHCA126	/	LF	Coating
	PCP mAb	mAb	GHMA126	Mouse	LF	Labeling
PPX	PPX-BSA	conjugation	GHCA138-1	/	LF	Coating
	PPX mAb	mAb	GHMA138-1	Mouse	LF	Labeling
COC	COC-BSA	conjugation	GHCA108	/	LF	Coating
	COC mAb	mAb	GHMA108	Mouse	LF	Labeling

DOA



Parameter	Product	Type	Catalog No.	Source	Application	Recommended Use
MOP	MOP-BSA	conjugation	GHCA118	/	LF	Coating
	MOP mAb	mAb	GHMA118	Mouse	LF	Labeling
MDMA	MDMA-BSA	conjugation	GHCA121	/	LF	Coating
	MDMA mAb	mAb	GHMA121	Mouse	LF	Labeling
BAR	BAR-BSA	conjugation	GHCA125	/	LF	Coating
	BAR mAb	mAb	GHMA125	Mouse	LF	Labeling
OPI	OPI-BSA	conjugation	GHCA136-1	/	LF	Coating
	OPI mAb	mAb	GHMA136-1	Mouse	LF	Labeling
TRA	TRA-BSA	conjugation	GHCA150-1	/	LF	Coating
	TRA mAb	mAb	GHMA150-1	Mouse	LF	Labeling
K2	K2-BSA	conjugation	GHCA176	/	LF	Coating
	K2 mAb	mAb	GHMA176	Mouse	LF	Labeling
TCA	TCA-BSA	conjugation	GHCA186-1	/	LF	Coating
	TCA mAb	mAb	GHMA186-1	Mouse	LF	Labeling
BUP	BUP-BSA	conjugation	GHCA129	/	LF	Coating
	BUP mAb	mAb	GHMA129	Mouse	LF	Labeling
ETO	ETO mAb	mAb	GHMA207-1	Mouse	LF	Labeling



Livestock Disease



Parameter	Product	Type	Catalog No.	Source	Application	Recommended Use
PRRSV	PRRSV48	rAg	GHCA022	E.coli	ELISA/LF	Labeling/Coating
PCV-II	PCV73	rAg	GHCA023	E.coli	ELISA/LF	Labeling/Coating
CSFV	C36	rAg	GHCA039	E.coli	ELISA/LF	Labeling/Coating
ASFV	ASFV-2H11(VP72)	mAb	GHMA027-3	Mouse	ELISA/LF	Coating
	ASFV-4F1(VP72)	mAb	GHMA027-5	Mouse	ELISA/LF	Labeling
PRV(gB)	W49	rAg	GHCA064-1	E.coli	ELISA/LF	Labeling/Coating
	W37	rAg	GHCA064-2	E.coli	ELISA/LF	Labeling/Coating
	W51	rAg	GHCA064-3	E.coli	ELISA/LF	Labeling/Coating
PRV(gE)	W35	rAg	GHCA067-1	E.coli	ELISA/LF	Labeling
	W76	rAg	GHCA067-2	E.coli	ELISA/LF	Coating
Seneca Valley Virus	SV21	rAg	GHCA087-1	E.coli	ELISA/LF	Labeling/Coating
FMDV	S27(O type)	rAg	GHCA048-1	E.coli	ELISA/LF	Labeling/Coating
	S36(A type)	rAg	GHCA048-2	E.coli	ELISA/LF	Labeling/Coating
	S39(Asia I Type)	rAg	GHCA048-3	E.coli	ELISA/LF	Labeling/Coating
BVDV	BV125	rAg	GHCA075-1	E.coli	ELISA/LF	Labeling/Coating
IBR	G76	rAg	GHCA076-1	E.coli	ELISA/LF	Labeling/Coating
Bovine Tuberculosis	MB97	rAg	GHCA066-1	E.coli	ELISA/LF	Labeling/Coating
	MB63	rAg	GHCA066-2	E.coli	ELISA/LF	Labeling/Coating
	MB35	rAg	GHCA066-3	E.coli	ELISA/LF	Labeling/Coating
Bacterium Burgeri	LPS	Natural	GHCA078-3	Natural	ELISA/LF	Coating
	SPA	rAg	GHCA080-1	E.coli	ELISA/LF	Labeling
PPRV	S76	rAg	GHCA011-1	E.coli	ELISA/LF	Labeling/Coating

Livestock Disease



Parameter	Product	Type	Catalog No.	Source	Application	Recommended Use
Newcastle Disease	A66	rAg	GHCA077-1	E.coli	ELISA/LF	Labeling/Coating
Echinococcosis	E65	rAg	GHCA074-1	E.coli	ELISA/LF	Labeling/Coating
	E71	rAg	GHCA074-2	E.coli	ELISA/LF	Labeling/Coating
Avian Influenza Virus	FluA-4D8	mAb	GHMA092-2	Mouse	ELISA/LF	Labeling
	FluA-2E3	mAb	GHMA092-3	Mouse	ELISA/LF	Coating

Pet Disease



Parameter	Product	Type	Catalog No.	Source	Application	Recommended Use
CDV19	CDV19	rAg	GHCA096	E.coli	ELISA/LF	Labeling/Coating
CPV27	CPV27	rAg	GHCA079-1	E.coli	ELISA/LF	Labeling/Coating
CAV46	CAV46	rAg	GHCA054-1	E.coli	ELISA/LF	Labeling/Coating
Leptospira canicola	L112	rAg	GACA053-1	E.coli	ELISA/LF	Labeling/Coating
	L89	rAg	GACA053-2	E.coli	ELISA/LF	Labeling/Coating
FHV-I	FHV51	rAg	GHCA084-1	E.coli	ELISA/LF	Labeling/Coating
	FHV68	rAg	GHCA084-2	E.coli	ELISA/LF	Labeling/Coating
Feline Calicivirus	FCV53	rAg	GHCA057-1	E.coli	ELISA/LF	Labeling/Coating
Feline Parvovirus	FPV36	rAg	GHCA012-1	E.coli	ELISA/LF	Labeling/Coating
FeLV	FLV66	rAg	GHCA086-1	E.coli	ELISA/LF	Labeling/Coating
FIV	P79	rAg	GHCA049-2	E.coli	ELISA/LF	Labeling/Coating
CCRP	CCRP Antigen	Ag	GHCA056	Canine	ELISA/LF	Quality Control
	CCRP-1E9	mAb	GHMA063-3	Mouse	ELISA/LF	Coating

Pet Disease



Parameter	Product	Type	Catalog No.	Source	Application	Recommended Use
CCRP	CCRP-8H6	mAb	GHMA063-2	Mouse	ELISA/LF	Labeling
fSAA Feline serum amyloid A	fSAA antigen	rAg	GHCA094-2	E.coli	ELISA/LF	Quality Control
	fSAA-3F8	mAb	GHMA066-5	Mouse	ELISA/LF	Coating
	fSAA-5B7	mAb	GHMA066-6	Mouse	ELISA/LF	Labeling
Feline NT-proBNP	Feline NT-proBNP	rAg	GHCA107-1	E.coli	ELISA/LF	Quality Control
	Feline NT-proBNP-1A12	mAb	GHMA107-1	Mouse	ELISA/LF	Coating
	Feline NT-proBNP-4G6	mAb	GHMA107-2	Mouse	ELISA/LF	Labeling
	Feline NT-proBNP-13D7	mAb	GHMA107-3	Mouse	ELISA/LF	Labeling
Canine NT-proBNP	Canine NT-proBNP	rAg	GHCA102-1	E.coli	ELISA/LF	Quality Control
	Canine NT-proBNP-6C8	mAb	GHMA102-1	Mouse	ELISA/LF	Coating
	Canine NT-proBNP-3A4	mAb	GHMA102-2	Mouse	ELISA/LF	Labeling
CPL Canine pancreatitis	CPL-2H4	mAb	GHMA131-1	Mouse	ELISA/LF	Coating
	CPL-5C7	mAb	GHMA131-2	Mouse	ELISA/LF	Labeling
FPL Feline pancreatitis	FPL-12H11	mAb	GHMA152-1	Mouse	ELISA/LF	Coating
	FPL-7G3	mAb	GHMA152-2	Mouse	ELISA/LF	Labeling
RLN Relaxin	RLN Antigen	rAg	GHCA092	E.coli	ELISA/LF	Quality Control
	RLN-6B6	mAb	GHMA095-3	Mouse	ELISA/LF	Labeling
	RLN-2F8	mAb	GHMA095-6	Mouse	ELISA/LF	Coating
cProg	cProg-Albumin	conjugation	GHCA021-2	/	ELISA/LF	Coating
	cProg-22D8	mAb	GHMA118-2	Mouse	ELISA/LF	Labeling
CDV	CDV quality control	Ag	GHCT023-1	Culture	ELISA/LF	Quality Control
	CDV-7G5	mAb	GHMA110-1	Mouse	ELISA/LF	Labeling

Pet Disease



Parameter	Product	Type	Catalog No.	Source	Application	Recommended Use
CDV	CDV-3D3	mAb	GHMA110-2	Mouse	ELISA/LF	Coating
CPV	CPV quality control	Ag	GHCT025-1	Culture	ELISA/LF	Quality Control
	CPV-3A9	mAb	GHMA114-1	Mouse	ELISA/LF	Coating
	CPV-4B7	mAb	GHMA114-2	Mouse	ELISA/LF	Labeling
Canine adenovirus II type	CAV-2 quality control	Ag	GHCT028-1	Culture	ELISA/LF	Quality Control
	CAV2-8B2	mAb	GAMA140-1	Mouse	ELISA/LF	Labeling
	CAV2-5G7	mAb	GAMA140-2	Mouse	ELISA/LF	Coating
CCV	CCV quality control	Ag	GHCT040-1	E.coli	ELISA/LF	Quality Control
	CCV-2E6	mAb	GHMA112-1	Mouse	ELISA/LF	Coating
	CCV-8D5	mAb	GHMA112-2	Mouse	ELISA/LF	Labeling
CIV	CIV quality control	Ag	GHCT036-1	E.coli	ELISA/LF	Quality Control
	FluA-2E3	mAb	GHMA092-3	Mouse	ELISA/LF	Coating
	FluA-4D8	mAb	GHMA092-2	Mouse	ELISA/LF	Coating
N-protein RV	NP-21D2	mAb	GHMA010	Mouse	ELISA/LF	Coating
	NP-17F4	mAb	GHMA011	Mouse	ELISA/LF	Labeling
FHV-I	FHV-1 quality control	Ag	GHCT037-1	Culture	ELISA/LF	Quality Control
	FHV-4H7	mAb	GHMA084-2	Mouse	ELISA/LF	Coating/Labeling
	FHV-5G9	mAb	GHMA084-3	Mouse	ELISA/LF	Coating/Labeling
FCV	FCV quality control	Ag	GHCT039-1	Culture	ELISA/LF	Quality Control
	FCV-6C13	mAb	GHMA115-4	Mouse	ELISA/LF	Labeling
	FCV-6D8	mAb	GHMA115-5	Mouse	ELISA/LF	Coating
FPV	FPV quality control	Ag	GHCT026-1	Culture	ELISA/LF	Quality Control

Pet Disease



Parameter	Product	Type	Catalog No.	Source	Application	Recommended Use
FPV	FPV-7E3	mAb	GHMA113-1	Mouse	ELISA/LF	Coating/Labeling
	FPV-5G6	mAb	GHMA113-2	Mouse	ELISA/LF	Coating/Labeling
FeLV	FeLV quality control	rAg	GHCT038-1	E.coli	ELISA/LF	Quality Control
	FeLV-12G5	mAb	GHMA147-1	Mouse	ELISA/LF	Coating
	FeLV-7F9	mAb	GHMA147-2	Mouse	ELISA/LF	Labeling
TOXO	Toxo-10H9	mAb	GHMA143-1	Mouse	ELISA/LF	Coating
	Toxo-11F2	mAb	GHMA143-2	Mouse	ELISA/LF	Labeling
	Tox48	rAg	CHCA083-1	E.coli	ELISA/LF	Labeling/Coating
Giardia	GIA-2F4	mAb	GHMA141-1	Mouse	ELISA/LF	Labeling
	GIA-9C6	mAb	GHMA141-2	Mouse	ELISA/LF	Coating
Heartworm	CHW-13G4	mAb	GHMA151-1	Mouse	ELISA/LF	Labeling
	CHW-1C8	mAb	GHMA151-2	Mouse	ELISA/LF	Coating
Leishmania Canis	LC55	rAg	GHCA139-1	E.coli	ELISA/LF	Labeling/Coating

Others



Parameter	Product	Type	Catalog No.	Source	Application	Recommended Use
	Mouse IgG	mAb	GHMA064-1	Mouse	ELISA/LF	/
	Goat anti Mouse IgG	pAb	GHPA002	Goat	ELISA/LF	/
	Rabbit IgG	pAb	GHPA010-1	Rabbit	ELISA/LF	Labeling
	Goat anti Rabbit IgG	pAb	GHPA009-1	Goat	ELISA/LF	Coating
	Chicken IgY	pAb	GHPA016	Chicken	ELISA/LF	Labeling
	Goat anti Chicken IgY	pAb	GHPA017	Goat	ELISA/LF	Coating
Mouse anti Human IgG	IgG-7C4	mAb	GHMA019-2	Mouse	ELISA/LF	Coating
Mouse anti Human IgM	IgM-6C5	mAb	GHMA018-2	Mouse	ELISA/LF	Coating
Rabbit anti Canine IgG	Rabbit anti Canine IgG	pAb	GHPA004	Rabbit	ELISA/LF	/
Rabbit anti Pig IgG	Rabbit anti Pig IgG	pAb	GHPA014	Rabbit	ELISA/LF	/
SPA	SPA	rAg	GHCA080-1	E.coli	ELISA/LF	/
Protein A+G	Protein A+G	rAg	GHCA080-3	E.coli	ELISA/LF	/
Anti RBC	Anti Erythrocyte Antibody	mAb	GHMA040	Mouse	ELISA/LF	/
	Blockers	mAb	GHMA045	Mouse	ELISA/LF	/
BSA	BSA	Extractive	GHB034	Bovine	ELISA/LF	/
	BSA	Extractive	GHB035	Bovine	ELISA/LF	/

