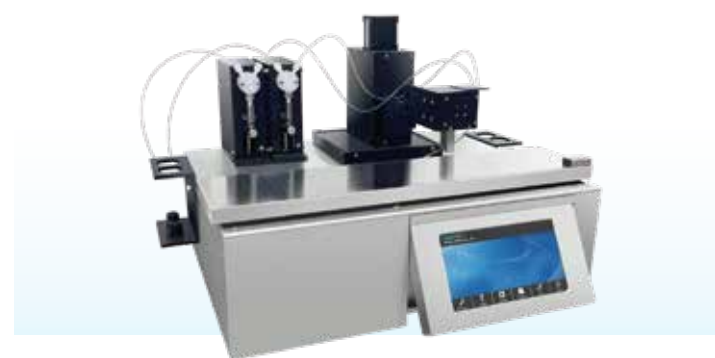


3D Platform Dispenser **HMY300**



HMY300 dispenser instrument adopts high-precision stepping pump to carry out liquid transportation, which can realize the control of non-pulse liquid flow and ensure the formation of uniform and single solution lines on the membrane. The polyester hollow fiber tube used for dispensing has good strength and flexibility. When dispensing, it can not only ensure the quality of the line, but also ensure that the membrane surface structure is not damaged.

Input power: ~ 220V+22V 200W 50Hz ~ 60Hz 2A

Minimum dispensing interval: 3mm

Dispensing platform width: 112mm

Dispensing concentration: 0.10~2.00 ul/cm

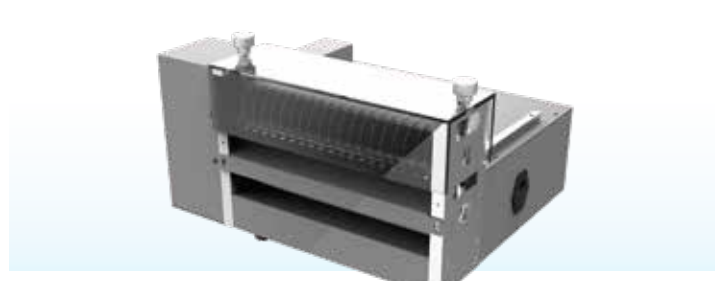
Dispensing efficiency: 250 sheets per hour

Syringe capacity(standard configuration): 500ul/1000ul

Platform moving speed: 50~125mm/s

Number of standard pump: 2, can be up to 4

Roller cutter **RCM200**



RCM200 roller cutter is adapted to cutting materials like glass fiber, absorbent pads and conjugate pads. The width can be customized to 10mm/12mm/16mm/...by customers.

Product model: RCM200

Maximum cutting speed: 10 pads/min

Maximum applicable material width: 200mm

Cutting precision: ±0.1mm

Accessory cutter **LCM300**



LCM Accessory cutter adopts the same principle as the strip guillotine cutter. The width of applicable cutting material is increased and it can be used for sample pads, conjugate pads, absorbent pads, glass fiber and other pads.

Product model: LCM300

Cutting precision: ±0.1mm

Applicable material width: 200-300mm

Maximum cutting speed: 200times/minute

Automatic NC Membrane Laminator **TM1000**



The production process of the TM1000 automatic NC membrane laminator consists of three steps: manual membrane tearing, automatic membrane sticking, and auxiliary material cutting. This process is suitable for rapid test production enterprises with a certain scale.

Equipment dimensions: 1391mm×476mm×715mm

Input power: 100 ~ 240VAC 600W 50Hz ~ 60Hz

Input material width: 100mm

Weight: About 80kg

Laminating speed: 1200pcs/hour

Applicable material thickness: 2mm

Continuous dispenser **LHM1200**



The LHM1200 continuous dispenser employs high-resolution injection pumps and a stable servo system, enabling more precise dispensing and uniform line cutting. It can be customized for the number of dispensing lines, and various parameters or data can be adjusted through the interface for convenient operation. The continuous transmission cutting of the conveyor belt effectively reduces human errors or the rate of defective products. It is suitable for rapid test production enterprises with a certain scale.

Speed: 125mm/s

Input power: 90-240V 50/60Hz/600W

Conveyor belt platform: Length: 1350mm Width: 150mm

Dispensing precision: ±1%

Number of standard pumps: 4-8

Equipment dimensions: 1350mm*460mm*300mm

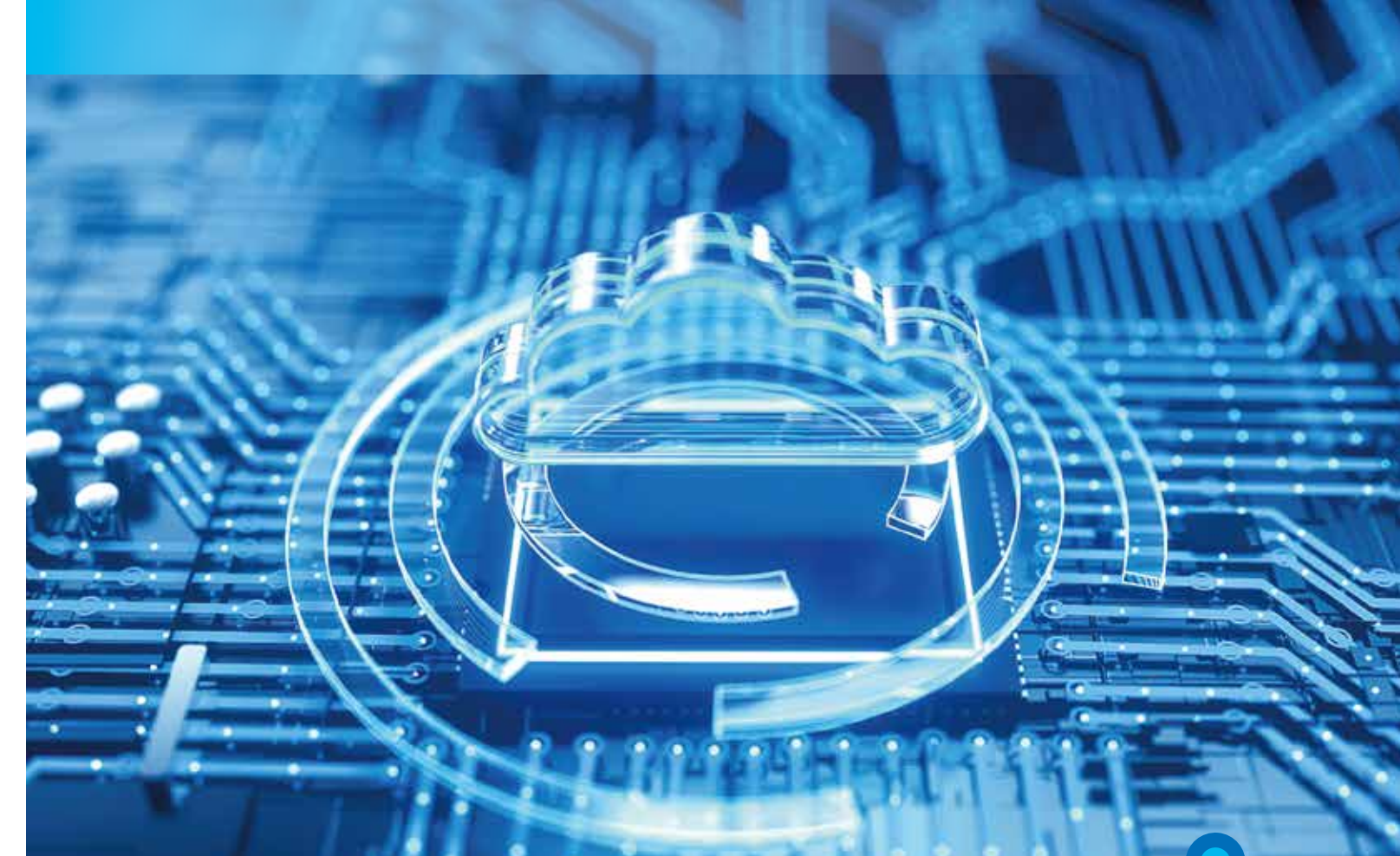
Three axis gold sprayer **LPJ600**



Overall dimensions: 1200mmx700mmx640mm

Input power: 100~240VAC 450W 50Hz~60Hz

Efficiency: 500pcs/hour



IVD MANUFACTURE EQUIPMENT POCT ANALYZER

HANGZHOU FRENOVO BIOTECH CO., LTD.

Email enquiry@frenovo.com Web www.frenovobio.com



- Website -



- Catalogue -

Colloidal-Gold/Fluorescence Quantitative Reader

JR300/FR610



JR300 is a new generation of immunochromatographic reader and FR610 is an immunofluorescence detection system based on photoelectric detection principle developed by Hangzhou Deepcre Technology Co., Ltd.

We also build a data platform for some specific service. The readers have high detection accuracy, strong stability, fast detection speed and low cost. They are widely used in disease detection, medical care, epidemic surveillance, food inspection and quarantine and other fields.

Product model: JR300/FR610	Test time: ≤5 seconds
CV: ≤1.0%	Number of items stored: 200
Storage records: 10000	U disk data import and export: Yes
Network data test: Optional	Wireless data connection: Optional
Port: USB、NBIOT (Optional)	Test result printed: Yes(Thermal printer)

Strip Guillotine cutter

BCM500



High Precision Strip Cutter adopts stepper motor to drive the mechanical parts to precisely control the inputting width of the sheet. This high speed and high torque motor drives blades along with the sheet feeding components to cut it into strips fast and accurately, it significantly reduces the labor cost and increase the work efficiency.

Product model: BCM500	Input power: ~220V±22V 200W 50Hz~60Hz
Cutting width: 0.50~9.99mm	Material width: 56~94mm
Applicable material thickness: ≤4mm	Material residual: 10mm
Cutting precision: ±0.05mm	Cutting speed: 0~220times/min

High- Precision 3D Platform Dispenser

XYZ3000



XYZ3000 3D platform dispenser adopts high-precision stepping pump to carry out liquid transportation, which can realize the control of non-pulse liquid flow and ensure the formation of uniform and single solution lines on the membrane. The instrument can not only carry out solution labeling to meet the requirements of the package of antibody solution of NC membrane in gold labeled strip, but also carry out solution spraying to meet the requirements of the package of gold spraying solution.

Product model: XYZ3000	Input power: ~220V±22V 90W 50Hz~60Hz 2A
Platform Area: 476*112mm	Working Area: 350*85mm
Dispensing efficiency: 250 sheet/hour	Spraying efficiency: 400 strip/hour
Platform moving speed: 50-125mm/s	Dispensing and spraying concentration: 0.10~9.99 ul/cm
Minimum fill and drain volume: 1ul	Number of standard pump: 3, can be up to 5

Assembly roller

PSM200/PSM300



The machine uses mechanical compacting method to press and close the cassette firmly and quickly and it significantly reduces the labor force and increases the production efficiency.

The running belt conveys the semi-assembled cassettes to the rollers: one small prepress roller and a bigger compacting roller afterwards, after these twice pressing, the cassette can be closed perfectly. This instrument is widely used in rapid test production. PSM300 is a longer belt version of PSM200.

Product model: PSM200/PSM300	Input power: ~220V±22V 200W 50Hz~60Hz
Cassette thickness: 3-8mm,customized	Max Working Width: 254mm
Max Working Speed: 300mm/s	Conveyor width: 250mm, customized

3D Platform Gold Sprayer

PJY200

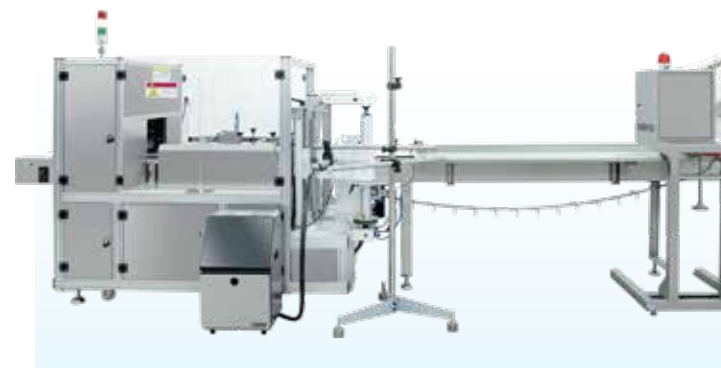


PJY200 high-precision 3D platform dispenser instrument adopts high-precision stepping pump to carry out liquid transportation, which can realize the control of non-pulse liquid flow and ensure the formation of uniform and single solution lines on the membrane. Gold spraying needs to be driven by the origin of external high pressure.

Product model: PJY200	Spraying concentration: 1.00~9.99 ul/cm
Input power: ~220V±22V 200W 50Hz~60Hz 2A	Minimum fill and drain volume: 1ul
Overall dimensions: 568 mm×378 mm×349 mm	Reagent residual volume: Approach to 0
Platform (working) range: 476*112(350*85)mm	Maximum storage program: 50
Spraying efficiency: 400 pieces per hour	Syringe capacity(standard configuration): 500ul/1000ul
Platform moving speed: 50~125mm/s	Number of standard pump: 1

Automatic pouch packaging machine

ZDM100/ZDM400



ZDM100 automatic pouch packaging machine is mainly used for packaging desiccants, cassettes, or test strips. It can significantly reduce labor costs, increase bagging efficiency, and ensure stable and high-quality packaging.

Note: 4 channels of ZDM400 can pouch simultaneously.

Bag length: 100-500mm
Packed product thickness: 1-10mm
Packaging Material: Composite film (OPP/CPP), Aluminum plating film, paper-plastic composite heat-sealing film, etc.
Power supply: 220V, 50/60Hz, 3200W
Conveyor belt size: 2000 mm
Conveyor belt length and width: customizable
Bag width: 70-240mm
Roll diameter: up to 320mm
Packaging speed: 40-80 packs/minute
Equipment dimensions (including conveyor belt): (L)4500 * (W)980 * (H)1500 mm
Weight: About 800KG